



上海知楚仪器有限公司  
SHANGHAI ZHICHU INSTRUMENT CO.,LTD.

Ihr Fachhändler:  
[www.axon-labortechnik.de](http://www.axon-labortechnik.de)



Axon Laborotechnik GmbH  
Im Braumenstück 16 - D-67659 Kaiserslautern  
Verkaufsbüro Tel. 06223/95 41 190 Fax: 06223/95 40 714  
info@axon-labortechnik.de

# ZHICHU

## SHAKER INCUBATOR & SHAKER FLASKS





## About Zhichu

Shanghai Zhichu Instrument Co., Ltd. is one of leading and professional manufacturer specialized in the field of shaking incubators in China. The company integrates R & D, production, sales and service for more than 13 years.





*Incubator shakers factory*



*Small animal imaging, biological safety cabinets and clean benches factory*



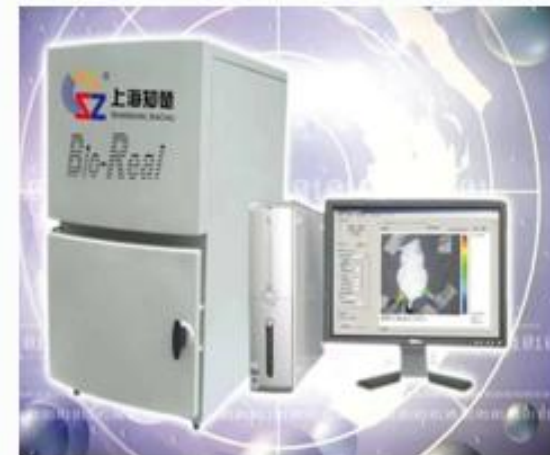
*CO2 incubators, etc. factory*



*Cell breaker, ice maker, grinder and other new product lines*



## Zhichu Biological Instruments.....





## Certificate

Certificate Number: UNIA2112328C-01

**Product:** Incubator Shakers  
**Applicant:** Shanghai Zhichu Instrument Co., Ltd  
 5th Floor, Building 37, No.158, Chexin Road Chedun Town, Songjiang District, Shanghai, China  
**Manufacturer:** Shanghai Zhichu Instrument Co., Ltd  
 5th Floor, Building 37, No.158, Chexin Road Chedun Town, Songjiang District, Shanghai, China  
**Model No.:** ZCZY-C8S, ZCZY-C8K, ZCZY-C80, ZCLY-180, ZCLY-180TS, ZCZY-A8, ZCZY-CN, ZCZY-CN1, ZCZY-CH, ZCZY-CSE, ZQZY-CF8, ZDZY-8F8, ZQZY-CN8, ZQZY-8S8, ZQZY-C99, ZQZY-1800, ZQZY-2000, ZQZY-30, ZQZY-100, ZQZY-40, ZQZY-50, ZQZY-60, ZQZY-70, ZQZY-80, ZQZY-90, ZQZY-100, ZQZY-180, ZQZY-300, ZQZY-380, ZQZY-200, ZQZY-218, ZQZY-220, ZQZY-780, ZQZY-78C, ZQZY-880, ZQZY-88C, ZQZY-980, ZQZY-98C, ZQZY-108, ZQZY-108H, ZQZY-88H, ZQZY-88H1, ZQZY-88H2, ZQZY-88C1, ZQZY-88, ZQZY-88F8, ZQZY-888, ZQZY-889, ZQZY-C8

**Trade Name:** N/A  
**Test Methods:** EN ISO 12103:2010, EN 60204-1:2018

The laboratory tested the EU T according to the above test methods. According to the test results, the product conforms to the Council Directive Machinery 2006/42/EC issued by the European Commission. It is possible to use CE marking to demonstrate the compliance with Directive Machinery.

The certificate applies to the tested sample above mentioned only and shall not imply an assessment of the whole production. It is only valid in connection with the test report number: UNIA2112323SR-01.

Dec. 16, 2022  
Issue Date

**CE**

Shenzhen United Testing Technology Co., Ltd  
 Shenzhen Zhiyu, Avenue 10th Ming, Jiahongyuan Tech Park, No. 80, Huanan 1st Road, Songjiang District, Shanghai, China 201600  
 Guangzhou Office (P.R. China): Industrial Road, Zhongshan, Dabang Street, Pingyuan Street, Guangzhou, Guangdong, China 511010  
 Tel: +86-755-841 80969-60-620-302778-69-21-30-6733-061 8018  
 Web: Sinc www.szunt.com.cn E-mail: info@szunt.com.cn

CE

## Certificate

Certificate Number: UNHR211231SHC-01

**Product:** Incubator Shakers  
**Applicant:** Shanghai Zhichu Instrument Co., Ltd  
 5th Floor, Building 37, No.158, Chexin Road Chedun Town, Songjiang District, Shanghai, China  
**Manufacturer:** Shanghai Zhichu Instrument Co., Ltd  
 5th Floor, Building 37, No.158, Chexin Road Chedun Town, Songjiang District, Shanghai, China  
**Model No.:** ZCZY-YC8S, additional models see appendix  
**Trade Name:** N/A  
**Test Methods:** IEC 62321-1-2:2013, IEC 62321-3-1:2013, IEC 62321-4-2:2013 +A1:2017, IEC 62321-5:2013, IEC 62321-6:2015, IEC 62321-7-1:2015, IEC 62321-7-2:2017, IEC 62321-8:2017

The laboratory tested the product provided by the applicant according to the above test methods. According to the test results, the product conforms to RoHS Directive (2011/65/EU) and Amendment (EU) 2015/863 issued by the European Commission. It is possible to use CE marking to demonstrate the compliance with RoHS Directive.

The certificate applies to the tested sample above mentioned only and shall not imply an assessment of the whole production. It is only valid in connection with the test report number: UNHR211231SHR-01.

Note: According to the requirements of the applicant for testing, details are shown in the test report.

Dec. 16, 2022  
Issue Date

**RoHS**

Shenzhen United Testing Technology Co., Ltd  
 Shenzhen Zhiyu, Avenue 10th Ming, Jiahongyuan Tech Park, No. 80, Huanan 1st Road, Songjiang District, Shanghai, China 201600  
 Guangzhou Office (P.R. China): Industrial Road, Zhongshan, Dabang Street, Pingyuan Street, Guangzhou, Guangdong, China 511010  
 Tel: +86-755-841 80969-60-620-302778-69-21-30-6733-061 8018  
 Web: Sinc www.szunt.com.cn E-mail: info@szunt.com.cn

RoHS

## CERTIFICATE OF CONFORMITY OF QUALITY MANAGEMENT SYSTEM CERTIFICATION

Certificate No. 17521Q2128.2R001

This is to certify the quality management system of  
**Shanghai Zhichu Instrument Co., Ltd.**  
 Unified social credit code/Organization Code: 913101125618930084  
 Registered address: 5th Floor, Building 37, No.158, Chexin Road, Chedun Town, Songjiang District, Shanghai  
 Operating address: 1001, SME City, No.201, Sanhang Road, Chedun Town, Songjiang District, Shanghai

is in conformity with  
GB/T19001-2016/ISO9001:2015 standard

This certificate covers the following scope of quality management system  
**Technology R&D and production of constant temperature incubators and shaking incubators used in the field of biotechnology**

Issue Date: Dec. 09, 2021  
 Review Date: Dec. 09, 2021  
 Valid Until: Dec. 09, 2024

CERTIFICATION ADDRESS: 1001, 1st building, NO.201 Guanganmen Street, Nishang District, Beijing

**IAF** **CNAS**

ISO9001



**CERTIFICATE OF FDA  
REGISTRATION SERVICE**



HEREBY CERTIFY THAT

**Shanghai Zhichu Instrument Co., Ltd.**

**HAS SUCCESSFULLY COMPLETED  
THE FDA REGISTRATION**

**FOR**

**OWNER/OPERATOR NUMBER: 10085515  
MEDICAL DEVICE LISTING NUMBER (MDL/LST):**

MDL/LST	Product Code	510K	Class	GMP/UDI	Device Name
D476312	JTQ	Exempt	1	Exempt	INCUBATOR SHAKER

FDA US AGENT

**IRC USA**  
www.IRC-US.com

*Charlie Mack*

PRINCIPAL ENGINEER

CERTIFICATE NO.: IRC-SZ-202206



**IRC**  
www.IRC-US.com  
*Your Partner in Achieving FDA Compliance*

**FDA**



## How to choose the shaking incubator

01 Temperature

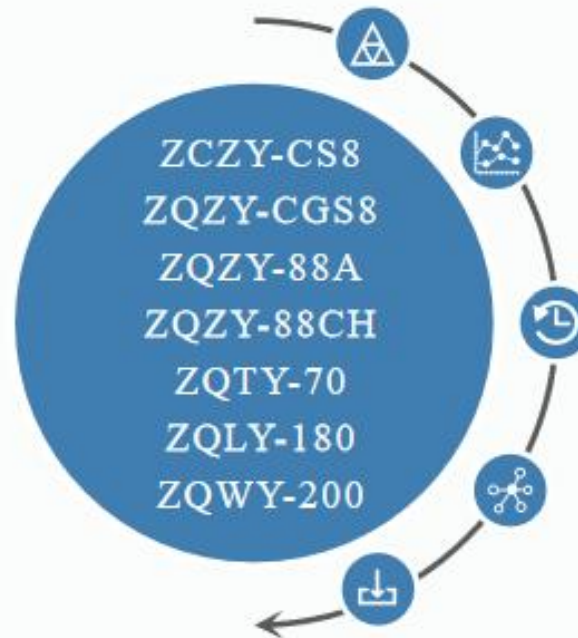
02 Working capacity

03 Orbit diameter

04 Shaking speed range



Learn about the models of Zhichu's shaking incubators



- “Z” - Zhichu
  - “C” - with CO2 function
  - “Z” - Stackable
  - “Y” - Shaker
  - “A” - A,B,C means 1 unit, 2 and 3 units
- 
- “Q” - with cooling
  - “G” - illumination function
  - “88” - working capacity
  - “S” - waterproof inner chamber
- 
- “H” - high speed to 1200 rpm or more
  - “T” - benchtop
- 
- “L” - floored
  - “W” - horizontal
- 
- “180” - working capacity
  - “200” - working capacity





二氧化碳振荡培养箱系列



p08 组合式大容量二氧化碳振荡培养箱 ZCZY-CS95  
p10 组合式超大容量二氧化碳振荡培养箱 ZCZY-CSE5  
p12 组合式二氧化碳振荡培养箱 ZCZY-CS8E5  
p14 组合式小容量二氧化碳振荡培养箱 ZCZY-CLN5  
p16 立式二氧化碳振荡培养箱 ZCZY-180E5

通用温控振荡培养箱系列



p48 小型台式恒温振荡培养箱 ZHTY-60E5  
p49 台式全温/恒温振荡培养箱 ZQTY-70E5  
p50 台式全温振荡培养箱 ZQTY-90E5  
p51 台式全温/恒温旋转振荡培养箱 ZQTY-90XS ZHTY-90XS  
p52 立式全温振荡培养箱 ZQTY-180E5

叠加式振荡培养箱系列



p20 大容量全温振荡培养箱 ZQZY-108E5  
p22 大容量全温振荡培养箱 ZQZY-98CE5  
p24 高速振荡培养箱 ZQZY-88CH5  
p26 高速双电机振荡培养箱 ZQZY-98CH  
p28 全温振荡培养箱 ZQZY-98CE5  
p53 立式大容量全温振荡培养箱 ZQZY-508E5  
p54 立式超大容量全温振荡培养箱 ZQZY-508E5  
p55 卧式全温振荡培养箱 ZQWY-200E5  
p56 卧式大容量全温振荡培养箱 ZQWY-218E5  
p57 卧式超大容量全温振荡培养箱 ZQWY-220E5

水浴和光照振荡培养箱系列



p30 小容量全温振荡培养箱 ZQZY-78CE5  
p32 组合式大容量全温振荡培养箱 ZQZY-C98E5  
p34 组合式全温振荡培养箱 ZQZY-CS8E5  
p36 大容量组合式全温振荡培养箱 ZQZY-BS8E5  
p38 组合式全温振荡培养箱 ZQZY-CF8E5  
p58 水浴恒温振荡培养箱 ZHSY-80E5  
p59 水浴往复恒温振荡培养箱 ZHSY-S0W5E5  
p69 立式光照振荡培养箱 ZQLY-180GE5  
p70 卧式光照振荡培养箱 ZQWY-200GE5  
p71 组合式光照振荡培养箱 ZQZY-CGS8E5

振荡器系列



p40 大容量组合式全温振荡培养箱 ZQZY-BF8E5  
p42 组合式往复全温振荡培养箱 ZQZY-CF8W  
p44 组合式全温振荡培养箱 ZQZY-C8E5  
p62 分液漏斗振荡器 ZFY-9  
p63 涂菌振荡器 ZTJ-9  
p64 台式振荡器 ZTY-70E5  
p65 落地式振荡器 ZLY-200E5  
p66 超大容量振荡器 ZDY-BE5  
p67 组合式振荡器 ZZY-CE5  
p68 滚瓶机 ZBP-9



## Zhichu shaking incubator series

- 01 CO<sub>2</sub> shaking incubator series
- 02 Stacked shaking incubator series
- 03 Universal temperature control shaking incubator series
- 04 Illumination shaking incubator series
- 05 Orbital shaker series
- 06 Water bath shaker series



CO<sub>2</sub> shaking incubator series



ZCLY-180



ZCZY-CS



ZCZY-CS9



ZCZY-CS8



ZCZY-CN  
ZCZY-CH  
ZCZY-CNH



## CO<sub>2</sub> shaking incubator series

Items	ZCZY-CSE	ZCZY-CS9	ZCZY-CS8	ZCZY-CN	ZCLY-180
Waterproof inner chamber			YES		
Antibacterial stainless steel inner chamber			YES		
Inner chamber		R (arc angle)			
Orbit(diameter)		50mm (26mm is optional)			26mm
Speed control range		10-250rpm (10-300rpm)			10-300rpm
Speed accuracy			±1 rpm		
Temperature control range		4°C~60°C (at 23°C~25°C)			
Temperature uniformity (at 37°C)		±0.5			±0.8
Door and window glass heating			YES		
Humidity	Humidifier humidification			Natural humidification	
CO <sub>2</sub> control range			0-20% (0.1%)		
UV sterilization			YES		
Blackout curtain	INCLUDE			OPTION	
LCD touch screen			YES		
Control method			P.ID		
Refrigeration bypass process			YES		
Maximum Capacity (Stainless Steel clamp holders)	250ml*77,500ml*45,1L*28,2L*18, 2.8L*12	250ml*72,500ml*45,1L*28,2L*18, 2.8L*11	250ml*66,500ml*45,1L*28,2L*15	250ml*36,500ml*25, 1L*162L*9	250ml*25,500ml*16,1L*9



*Upgradeable - Vertical opening front door (automatic)*



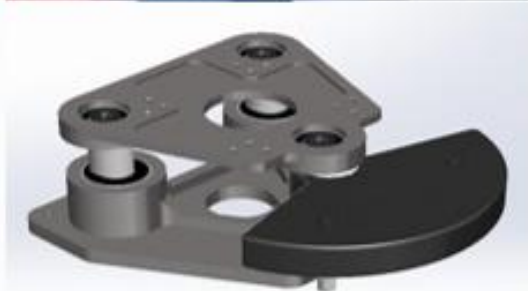


CO<sub>2</sub>

01 Infrared sensor(VAISALA)

02 Equipped with a flow meter, users only need to connect CO<sub>2</sub> gas to use.





### Drive system

- ▲ Servo motor: Starting from 10rpm, large torque, high load-bearing, quiet, precise control,
- ▲ Multi-axis design, more stable,
- ▲ The bearings are assembled by the method of thermal expansion and cold contraction, which has a long service life and is more stable, no abnormal noise,
- ▲ The three-wheel drive is better balanced at high speeds.



## Temperature

- Professional air duct design,
- The cross-flow fan makes the air supply more uniform,
- Using a heater with metal heat sink on the outer surface, the heating speed is faster and more uniform,
- Refrigeration bypass process: the cooling capacity can be automatically adjusted, and the temperature fluctuation is smaller; it can run stably at 4°C for a long time.
- The incubator structure is sealed, with good heat and cold preservation, and avoids external environmental influences,
- (Embraco)CFC-free environmental protection compressor,
- PT100 sensor





### *Natural humidification water plate*



### *Automatic and precise humidity control*

## Humidity

- ▲ **Natural humidification water plate:**  
Moisture is generated through the evaporation of water in the humidification water plate, and the relative humidity can reach about 95%.
  
- ▲ **Automatic and precise humidity control**
  - a. The pump is used to automatically replenish water, and the high-temperature steam is vaporized into molecular water vapor, and quickly spreads to the entire inner chamber with the internal circulation system of the incubator,
  - b. High-temperature humidity also plays a sterilizing role, avoiding the disadvantages of traditional humidity that tends to grow bacteria in the storage tank.





## Clean

- Antibacterial stainless inner chamber with arc angle is easy to clean and protects bacteria breeding. Antibacterial rate can reach 99%.
- The bottom of the inner chamber of the incubator can be washed thoroughly without dead ends.
- Insulating and tempered door glass as well as the stainless steel frames with heating function avoid fogging up the glass effectively, provides good view of culture state without opening.
- UV light sterilization(UV254nm-Ozone free)
- New shaking platform lock(video), easy to clean





### Details design

- ▲ Blackout curtain is suitable for dark cells (video),
- ▲ Beautiful design on the right side, 7-inch touch screen





Stacked shaking incubator series  
-Small capacity



ZQZY-78C



ZQZY-88C



ZQZY-98C



ZQZY-108

High speed



ZQZY-88CH



ZSZY-88CH

High speed



**Stacked shaking incubator series**  
*-Large capacity*



**ZQZY-CS8**





## Stacked shaking incubator series - small capacity

Items	ZQZY-78C	ZQZY-88C	ZQZY-98C	ZQZY-108C
CO <sub>2</sub> control function			NO	
Waterproof inner chamber			YES	
Inner chamber			R (arc angle)	
Antibacterial stainless steel inner chamber			NO	
Orbit(diameter)			26mm	
Speed control range	10-350rpm (Top unit 10-300rpm)			10-300rpm
Speed accuracy			±1 rpm	
Temperature control range		4°C~60°C (at 23°C~25°C)		
Temperature uniformity		±0.6 (at 37°C)		±0.7 (at 37°C)
Door and window glass heating			NO	
Humidity			NO	
Blackout curtain			OPTION	
Refrigeration bypass process			OPTION	
LCD touch screen			YES	
Control method			P.I.D	
Timer			0~999.9hrs	
Maximum Capacity (Stainless Steel clamp holders)	250ml*25/500ml*16/1L*9/ 2L*5/3L*5	250ml*30/500ml*20/1L*12/ 2L*8/ 3L*5	250ml*30/ 500ml*20/ 1L*12/ 2L*8/ 5L*4	250ml*42/ 500ml*25/ 1L*16/ 2L*9/ 3L*8
UV sterilization			YES	



## Stacked shaking incubator series - small capacity

Items	ZQZY-88CH	ZSZY-88CH
CO <sub>2</sub> control function		NO
Waterproof inner chamber		YES
Inner chamber		R (arc angle)
Antibacterial stainless steel inner chamber		NO
Orbit(diameter)	3mm (1.5mm is optional)	
Speed control range	10-800rpm (10-1200rpm)	10-1000rpm (10-1200rpm)
Speed accuracy		±1 rpm
Temperature control range	4°C~60°C (at 23°C~25°C)	
Temperature uniformity	±0.6 (at 37°C)	
Drive system	Single motor	Two motors / two shaking platforms
Door and window glass heating		NO
Humidity		NO
Blackout curtain		OPTION
Refrigeration bypass process		OPTION
LCD touch screen		YES
Control method		P.I.D
Timer		0~999.9hrs
Clamp holders	Column fixture for deep well plate	
UV sterilization		YES





## Stacked shaking incubator series - large capacity

Items	ZQZY-C8	ZQZY-CF8	ZQZY-CS8	ZQZY-CS9
CO <sub>2</sub> control function		NO		OPTION
Waterproof inner chamber		NO		YES
Inner chamber			R (arc angle)	
Antibacterial stainless steel inner chamber		NO		YES
Orbit(diameter)			26mm	
Speed control range			10-300rpm	
Speed accuracy			±1 rpm	
Temperature control range			4°C~60°C (at 23°C~25°C)	
Temperature uniformity	±1 (at 37°C)	±0.8 (at 37°C)	±0.6 (at 37°C)	±0.8 (at 37°C)
Door and window glass heating		NO		YES
Humidity		NO		OPTION
Blackout curtain			OPTION	INCLUDE
Refrigeration bypass process	OPTION			INCLUDE
Control method			P I D	
Timer			0~999.9 hrs	
Display method	LCD Button screen		LCD touch screen	
Maximum Capacity (Stainless Steel clamp holders)	250ml*66/ 500ml*45/ 1L*28/ 2L*15	250ml*66/ 500ml*45/ 1L*28/ 2L*15	250ml*66/ 500ml*45/ 1L*28/ 2L*15	250ml*72/ 500ml*45/ 1L*28/ 2L*18
UV sterilization			YES	





## Stacked shaking incubator series - large capacity

Items	ZQZY-CF8W	ZDZY-BF8	ZDZY-BS8
CO <sub>2</sub> control function		NO	OPTION
Waterproof inner chamber		NO	YES
Inner chamber		R (arc angle)	
Antibacterial stainless steel inner chamber		NO	YES
Oscillation mode	Reciprocating		Circle
Orbit(diameter)	50mm (100mm is optional)		26mm (50mm is optional)
Speed control range	10-120rpm		10-300rpm
Temperature control range		4°C~60°C (at 23°C~25°C)	
Temperature uniformity	±0.8 (at 37°C)	±0.8 (at 37°C)	±0.6 (at 37°C)
Door and window glass heating		NO	YES
Humidity		NO	OPTION
Blackout curtain			OPTION
Refrigeration bypass process			INCLUDE
Control method			P I D
Timer			0~999.9 hrs
LCD touch screen			YES
Maximum Capacity (Stainless Steel clamp holders)	250ml*60/ 500ml*40/ 1L*24	250ml*66/ 500ml*45/ 1L*28/ 2L*15/ 5L*8	250ml*66/ 500ml*45/ 1L*28/ 2L*15/ 5L*8
UV sterilization			YES



Universal temperature control  
shaking incubator series



ZQTY-70



ZHTY-50



ZQTY-90



ZQTY-90X (360° oscillation)



ZQLY-180



ZQLY-300



ZQWY-200



## Universal temperature control shaking incubator series

Items	ZHTY-50	ZQTY-50	ZHTY-70	ZQTY-70
CO <sub>2</sub> control function			NO	
Waterproof inner chamber			NO	
Antibacterial stainless steel inner chamber			NO	
Orbit(diameter)			26mm	
Speed control range	10-300rpm			10-400rpm
Speed accuracy			±1 rpm	
Temperature control range	Ambient temperature +5°C~60°C	4°C~60°C (at 23°C~25°C)	Ambient temperature +5°C~60°C	4°C~60°C (at 23°C~25°C)
Temperature uniformity			±1 (at 37°C)	
Door and window glass heating			NO	
Humidity			NO	
Control method			P.I.D	
Refrigeration bypass process			OPTION	
Display method			LCD Button screen	
Timer			0~999.9hrs	
Tray size (L*W)	344mm*307mm	420mm*348mm		518mm*424mm
Maximum Capacity (Stainless Steel clamp holders)	250ml*12/ 500ml*9/ 1L*4	250ml*16/ 500ml*9/ 1L*6		250ml*30/ 500ml*20 / 1L*12
UV sterilization	NO		YES	



## Universal temperature control shaking incubator series

Items	ZQTY-90	ZQTY-90X
CO <sub>2</sub> control function		NO
Waterproof inner chamber		NO
Antibacterial stainless steel inner chamber		NO
Orbit(diameter)	26mm	/
Oscillation mode	Circle	360° flip oscillation
Speed control range	10-400rpm	10-200rpm
Speed accuracy		±1 rpm
Temperature control range		4°C~60°C (at 23°C~25°C)
Temperature uniformity		±1 (at 37°C)
Door and window glass heating		NO
Humidity		NO
Control method		P.I.D
Refrigeration bypass process		OPTION
LCD touch screen		YES
Timer		0~999.9hrs
Tray size (L*W)	518mm*424mm	505mm*320mm
Maximum Capacity (Stainless Steel clamp holders)	250ml*30/ 500ml*20/ 1L*12/ 2L*6	(PE bottle holders)250ml*15/ 500ml*12/ 1L*8/ 2L*6/ 2500ml*6
UV sterilization		YES



## Universal temperature control shaking incubator series

Items	ZQLY-180	ZQLY-300	ZQWY-200
CO <sub>2</sub> control function		NO	
Waterproof inner chamber		NO	
Antibacterial stainless steel inner chamber		NO	
Orbit(diameter)		26mm	
Speed control range	10-320rpm		10-300rpm
Speed accuracy		±1 rpm	
Temperature control range		4°C~60°C (at 23°C~25°C)	
Temperature uniformity		±1 (at 37°C)	
Door and window glass heating		NO	
Humidity		NO	
Control method		P.I.D	
Refrigeration bypass process		OPTION	
Display method		LCD Button screen	
Timer		0~999.9hrs	
Tray size (L*W)	485mm*485mm	786mm*455mm	905mm*530mm
Maximum Capacity (Stainless Steel clamp holders)	250ml*25/ 500ml*16/ 1L*9	250ml*40/ 500ml*28/ 1L*15	250ml*60/ 500ml*40 / 1L*24
UV sterilization		YES	



Illumination shaking incubator series



ZQLY-180G



ZQWY-200G

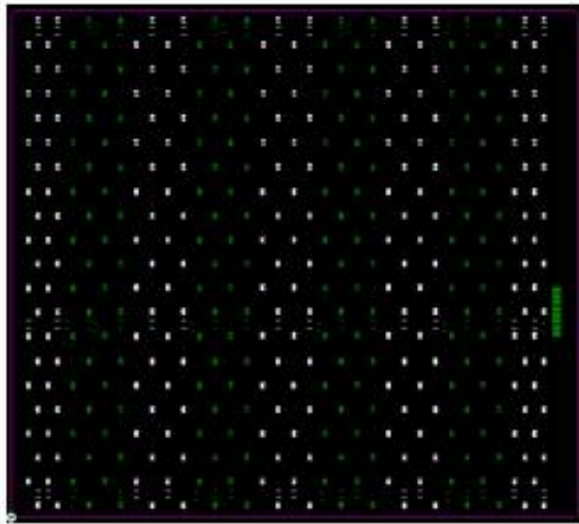


ZQZY-CGS8

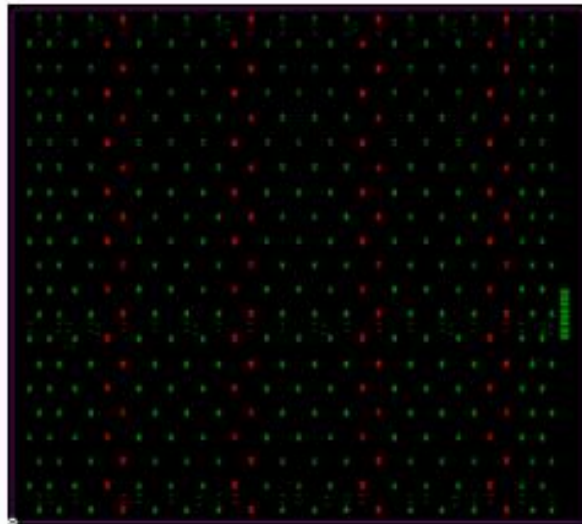




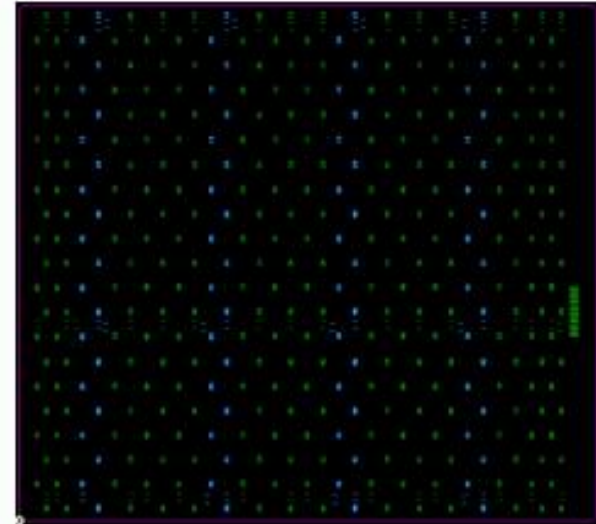
### New design for touch screen models



White



Red



Blue





## Light intensity control - Touch screen (programmable)

Light Parameter					
No.	Start time	Light(%)	No.	Start time	Light(%)
1	9 : 10	5	6	0 : 0	50
2	10 : 0	50	7	0 : 0	50
3	0 : 0	50	8	0 : 0	50
4	0 : 0	50	9	0 : 0	50
5	0 : 0	50	10	0 : 0	50

Light Parameter					
No.	Start time	Light(%)	No.	Start time	Light(%)
11	0 : 12	50	16	0 : 0	50
12	0 : 0	50	17	0 : 0	50
13	0 : 0	50	18	0 : 0	50
14	0 : 0	50	19	0 : 0	50
15	0 : 0	50	20	0 : 0	50





**Orbital shaker series**



**ZTY-70**



**ZLY-200**



**ZDY-B**



**ZZY-C**



**ZTJ-9**



**ZFY-9**



**ZGP-9**



Water bath shaker series



ZHSY-50



ZHSY-50W(reciprocating)



ZQSY-50 (Refrigerated)



# SHAKE FLASKS

*Designed for mammalian and insect cell culture*



125ml

250ml

500ml

1000ml

2800ml

5000ml



## Test Report



中国合格评定  
国家认可委员会  
CNAS L8964

RoHS

Dec. 06, 2011  
Issue Date



Report No. : UNIB22112316HR-01

Page 1 / 7



## *The Bottle Cap*



- **Material: PP**
- **0.2 $\mu$ m Vented Cap**

### 01

The bottle cap has a **breathable membrane** to promote the contact between cells and air and increase the frequency of gas exchange.

### 02

The size of the bottle mouth conforms to the **SBS standard**, suitable for quick connection of bioreactors.



## *The bottle body*

01

The bottle body is made of **PETG** or Styrene- butadiene(**BS**), which meets the requirements of food and drug contact management and avoids the problem of bisphenol A(BPA).

02

Individually packaged and sterilized for immediate use.

03

The bottle body is molded at one time to avoid surface knots.

04

The inner and outer surfaces of the bottle are smooth and clean, meeting the requirements of a mirror surface, with high permeability, reducing the risk of cell adhesion.

05

Sterilized by electron beam, SAL= $10^{-6}$ , to ensure no DNase/RNase, no pyrogen, no endotoxin.

*Less foaming*





*The bottle body Material*

Flask Size	PETG	Styrene- butadiene(BS)
125ml	√	
250ml	√	
500ml	√	
1000ml	√	
2800ml		√
5000ml		√







PN#	Z2022125G	Z2022250G	Z2022500G	Z20221000G	Z20222800G	Z20225000G
Flask size	125ml	250ml	500ml	1000ml	2800ml	5000ml
Cap	0.2 $\mu$ m Vented Cap					
Height(mm)	113.5	138.2	177.5	211.5	243	523
Bottleneck diameter(mm)	34	34	39	39	96.2	96.2
Bottle bottom diameter(mm)	66	83	101	127	164	228
Sterilization method	Irradiation sterilization					
Packing	24pcs / case	12pcs / case	12pcs / case	6pcs / case	6pcs / case	4pcs / case
Packing size(mm)	465*315*150	380*290*155	455*345*200	415*275*230	580*390*290	490*490*300